



GAT MONTHLY MEMBERSHIP PROGRESS REPORT

Results as of: 1/31/2022

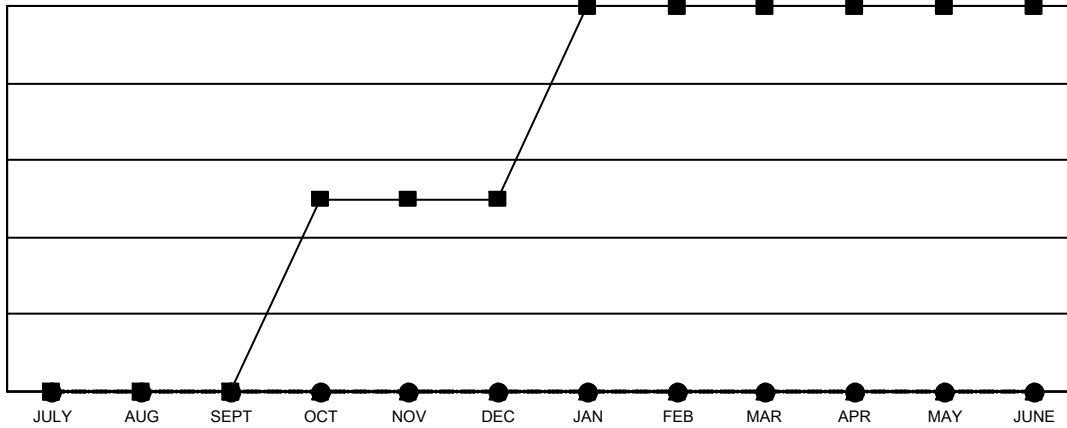
Multiple District 60

LOCATION: GUYANA

Clubs			
RESULTS FOR 2021-2022			
QUARTER	NEW CLUB GOAL	NEW CLUBS	DROPPED CLUBS
JULY/AUG/SEPT	0	0	0
OCT/NOV/DEC	1	0	2
JAN/FEB/MAR	1	0	1
APR/MAY/JUNE	0	0	0

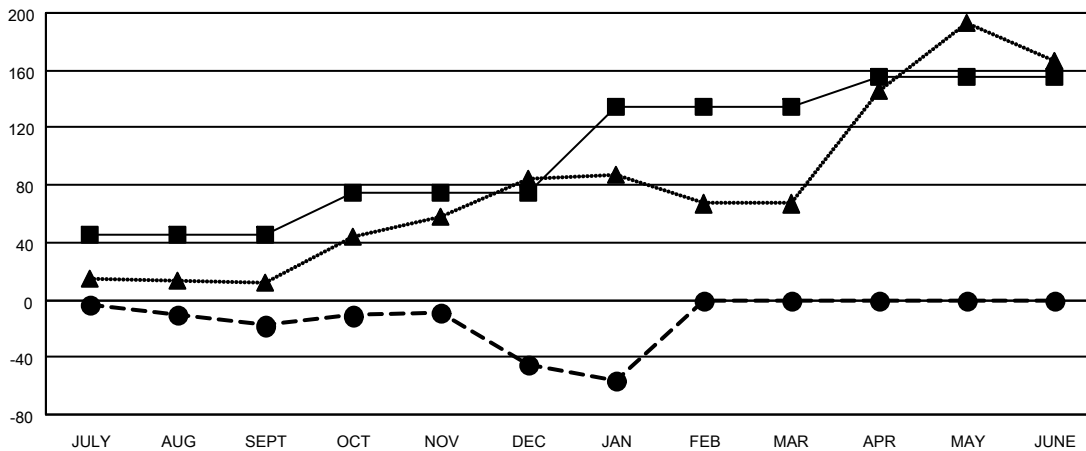
Members			
RESULTS FOR 2021-2022			
QUARTER	MEMBER GROWTH NET GOAL	MEMBER GROWTH ACTUAL	DROPPED MEMBERS ACTUAL (including transfers)
JULY/AUG/SEPT	45	40	48
OCT/NOV/DEC	30	94	116
JAN/FEB/MAR	60	23	33
APR/MAY/JUNE	20	0	0

GOALS AND ACTUAL NEW CLUBS CUMULATIVE



- CURRENT YEAR GOALS FOR NEW CLUBS
- CURRENT YEAR ACTUAL NEW CLUBS
- ▲- LAST YEAR ACTUAL NEW CLUBS

GOALS AND ACTUAL MEMBERS CUMULATIVE



- MEMBER GROWTH NET GOAL
- MEMBER GROWTH ACTUAL
- ▲- LAST YEAR MEMBERSHIP ACTUAL

DROPPED CLUBS: 3	38 CLUBS OF 118 ADDED 1 OR MORE NEW MEMBERS	GENDER DISTRIBUTION
DROPPED MEMBERS		MALE 1,474 (41.47%)
DECEASED 35		FEMALE 2,080 (58.53%)
CLUB CANCELLED 48		NON BINARY 0 (0.00%)
OTHER 113	CLICK HERE FOR CUMULATIVE MEMBERSHIP DATA	PREFER NOT TO ANSWER 0 (0.00%)
TOTAL 196		TOTAL FAMILY UNIT MEMBERS 147
		FAMILY MEMBERS PAYING HALF DUES 77